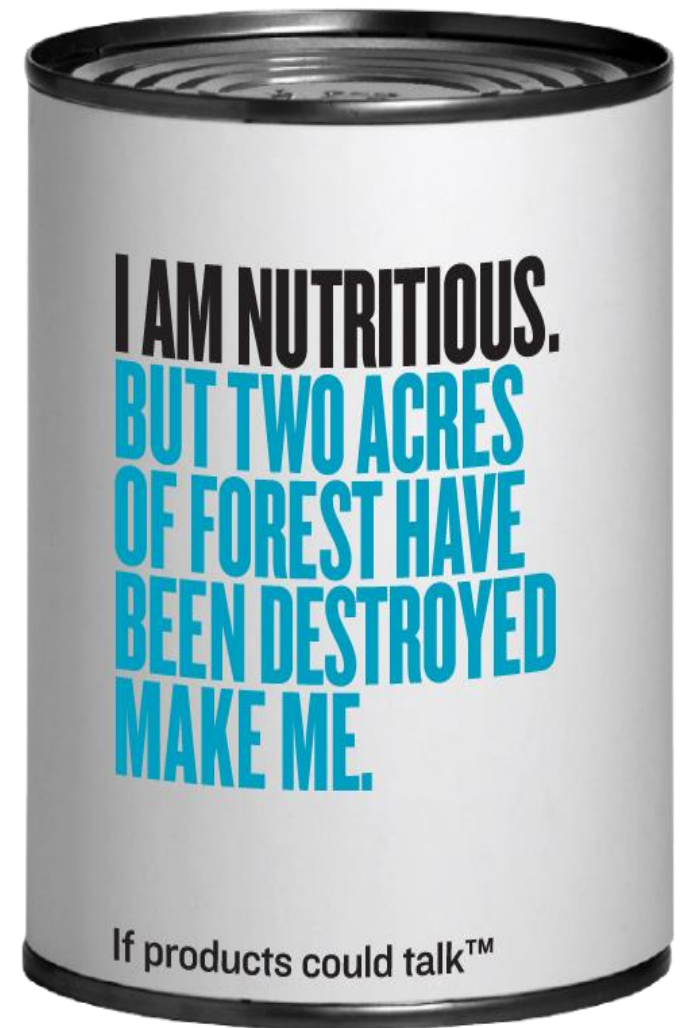


Alan Knight



Brazil, September 2015

Tissue

gn, everyday use



Sainsbury's
basics

Toilet Tissue

everyday design, everyday use

4 Rolls
200 sheets per roll







Global economy – challenges:

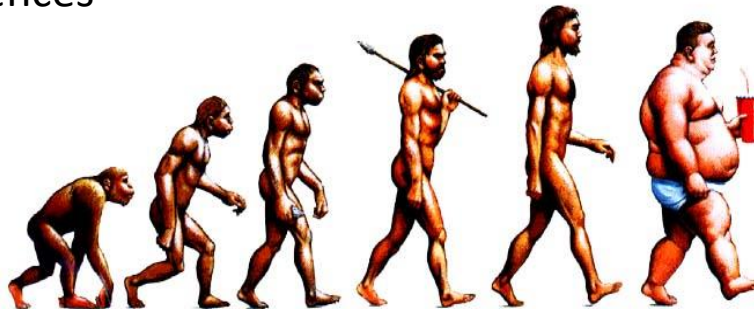
More people,



wanting more stuff,



with unintended consequences







WE SELL FOR LESS

WALMART

PHOTO CENTRE

PHARMACY

carmichael





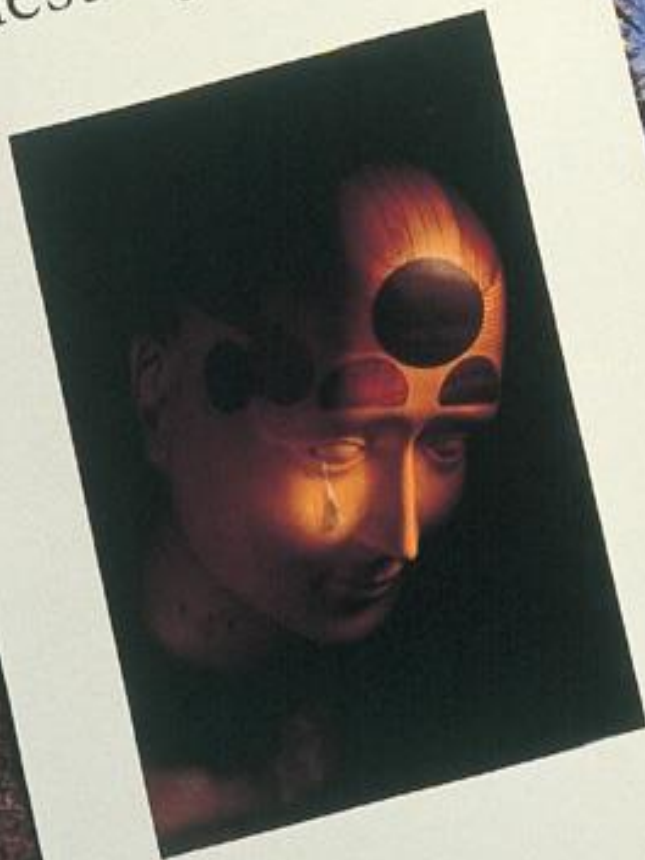
The image shows the exterior of a B&Q store. The building has a grey corrugated metal facade with a prominent orange horizontal band above the entrance. Large white letters spell out 'B&Q' on the upper part of the building. Below this, the word 'ENTRANCE' is written in white on the orange band. The entrance itself consists of large glass doors framed in orange. In front of the entrance, there are several orange cylindrical bollards with black bands. To the left of the entrance, there are stacks of materials, possibly pipes or cables, and a small sign. The sky is blue with some clouds.

B&Q

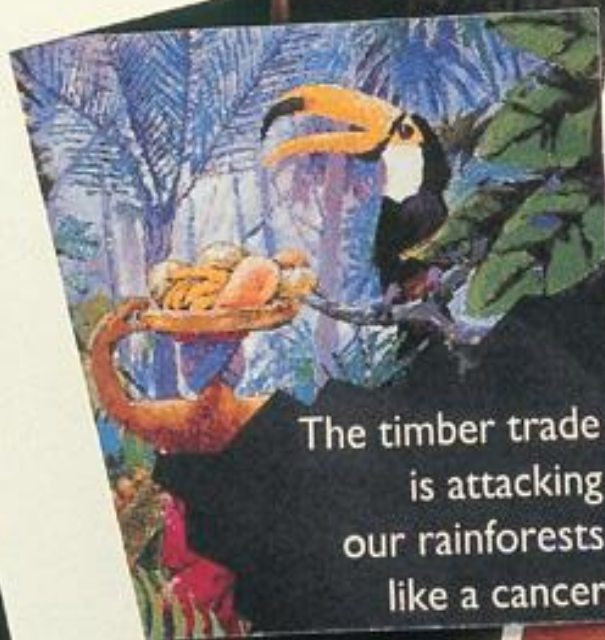
ENTRANCE



Every time you don't
specify timber, you're helping
to destroy our planet.



Think
Wood



The timber trade
is attacking
our rainforests
like a cancer







WWF®



A photograph of a kitchen interior. In the foreground, there are wooden cabinets with dark handles. Above the cabinets is a range hood with a glass panel. The background shows a window with a grid pattern and some kitchen items on the counter.

B&Q

When choosing from our 9
can be assured the timber
sources that are proven we
forests. Look for the FSC

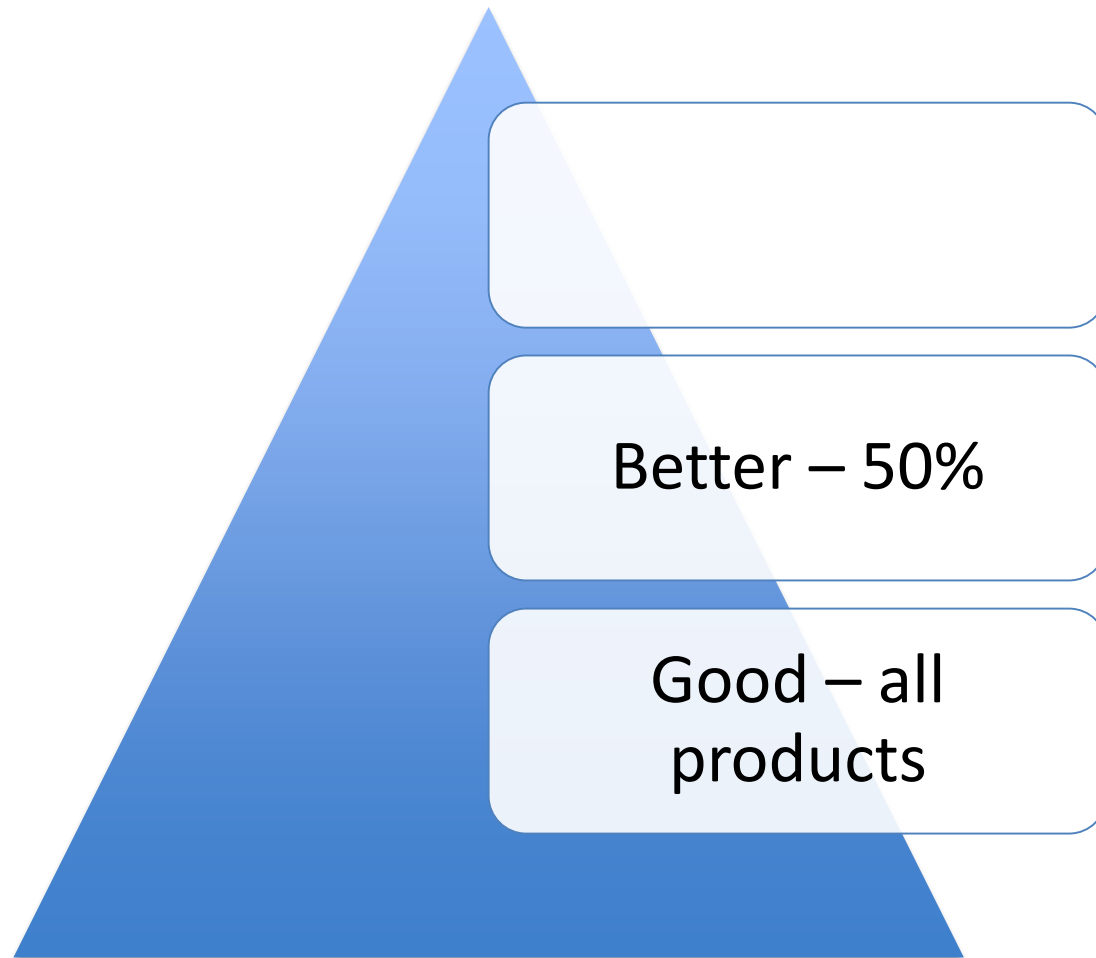


This logo certifi
comes from ind
certified well m

For more information, take
www.diy.com/aboutbandq.
queries about B&Q's susta
development programme, p
our Environment Helpline:

Freeph









Many Stewardship Councils & labeling schemes

- Forest Stewardship Council
- Pan European Forest Certification
- Canadian Standards Association
- Sustainable Forestry Initiative
- Indonesia Timber Scheme (LEI)
 - Malaysian Timber Council
 - Tropical Forest Trust
 - Rainforest Alliance
- Roundtable on Sustainable Palm Oil
 - Better Soya Initiative
 - Better Sugar Cane Initiative
 - Better Cotton Initiative
 - Community Mining
- Marine Stewardship Council
- Marine Aquarium Council
- Tourism Stewardship Council
 - Travel Life
 - Soil Association
 - Carbon Label
- Forest Disclosure Project
 - EU Flower
 - Nordic Swan
 - Blue Angel

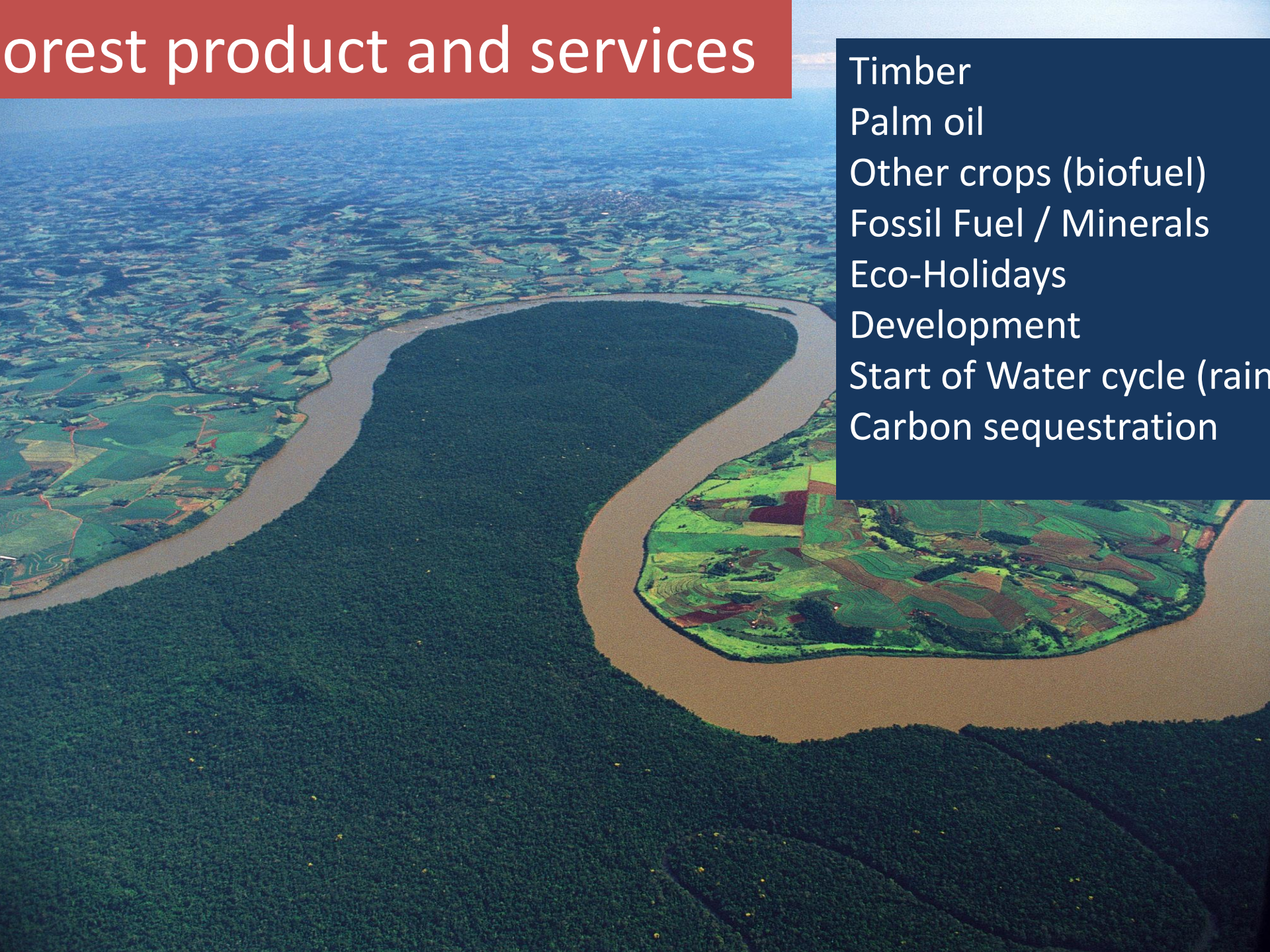
and many more...



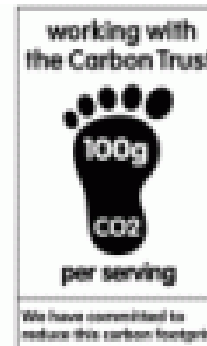




Forest product and services



Timber
Palm oil
Other crops (biofuel)
Fossil Fuel / Minerals
Eco-Holidays
Development
Start of Water cycle (rain)
Carbon sequestration





Ten, or so, major systems

- 1) Land – Natural Forests
- 2) Land – Agricultural
- 3) Land – Mines
- 4) Oceans / water
- 5) Energy use
- 6) Water use
- 7) People welfare
- 8) Animal welfare
- 9) Buildings
- 10) Tourist / place / destination





A single approach = 30 focus points

	Good - laws	Better – choice editing	Best – premium choice
Forests and natural land			
Mines			
Farms			
Oceans			
Animal welfare			
People welfare			
Building			
Energy Use			
Water use			
Tourist Dest.			

FREE E-BOOK

Dō



Scott Poynton

Beyond
Certification

DōShorts

“VT – TV”

- Values
- Transparency
- Transformation
- Verification





ENVI E EN ENVIRON

ENVIRON ENVIRON ENVIRON



Photo credit: Ian Loudon





Our supply chain of \$59 billion

Iron ore



Coal



Base metals



Capital expenditure



Scrap



Logistics





ArcelorMittal

IRMA

Initiative for Responsible
Mining Assurance



Steel Stewardship Forum
Responsiblesteel



PRINCES

185g

GUARANTEE OF QUALITY

This product has been specially selected and imported by Princes and should reach you in satisfactory condition. If it does not,

CHUNKS

BRINE



Thank you
Thank you
Thank you (certified)